

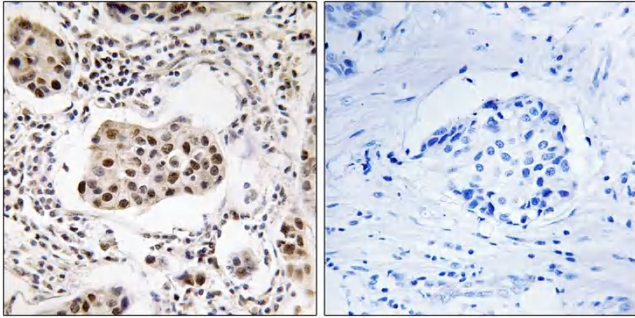


# Tctex5 Polyclonal Antibody

<b>Catalog No</b>	YP-Ab-04240
<b>Isotype</b>	IgG
<b>Reactivity</b>	Human;Mouse;Rat
<b>Applications</b>	IHC;IF;ELISA
<b>Gene Name</b>	PPP1R11
<b>Protein Name</b>	Protein phosphatase 1 regulatory subunit 11
<b>Immunogen</b>	The antiserum was produced against synthesized peptide derived from human PPP1R11. AA range:71-120
<b>Specificity</b>	Tctex5 Polyclonal Antibody detects endogenous levels of Tctex5 protein.
<b>Formulation</b>	Liquid in PBS containing 50% glycerol, 0.5% BSA and 0.02% sodium azide.
<b>Source</b>	Polyclonal, Rabbit,IgG
<b>Purification</b>	The antibody was affinity-purified from rabbit antiserum by affinity-chromatography using epitope-specific immunogen.
<b>Dilution</b>	IHC: 1/100 - 1/300. ELISA: 1/40000.. IF 1:50-200
<b>Concentration</b>	1 mg/ml
<b>Purity</b>	≥90%
<b>Storage Stability</b>	-20°C/1 year
<b>Synonyms</b>	PPP1R11; HCGV; TCTE5; Protein phosphatase 1 regulatory subunit 11; Hemochromatosis candidate gene V protein; HCG V; Protein phosphatase inhibitor 3
<b>Observed Band</b>	
<b>Cell Pathway</b>	protein phosphatase type 1 complex,nucleus,cytoplasm,
<b>Tissue Specificity</b>	Widely expressed.
<b>Function</b>	function:Inhibitor of protein phosphatase 1.,tissue specificity:Widely expressed.,
<b>Background</b>	This gene encodes a specific inhibitor of protein phosphatase-1 (PP1) with a differential sensitivity toward the metal-independent and metal-dependent forms of PP1. The gene is located within the major histocompatibility complex class I region on chromosome 6. [provided by RefSeq, Jul 2008],
<b>matters needing attention</b>	Avoid repeated freezing and thawing!
<b>Usage suggestions</b>	This product can be used in immunological reaction related experiments. For more information, please consult technical personnel.



## Products Images



Immunohistochemistry analysis of paraffin-embedded human breast carcinoma tissue, using PPP1R11 Antibody. The picture on the right is blocked with the synthesized peptide.